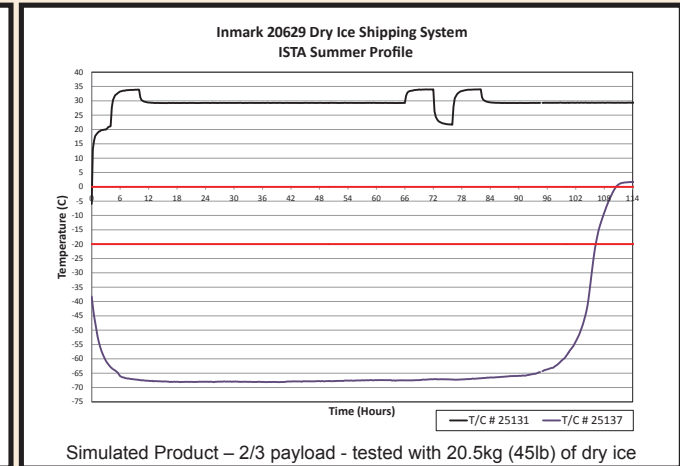
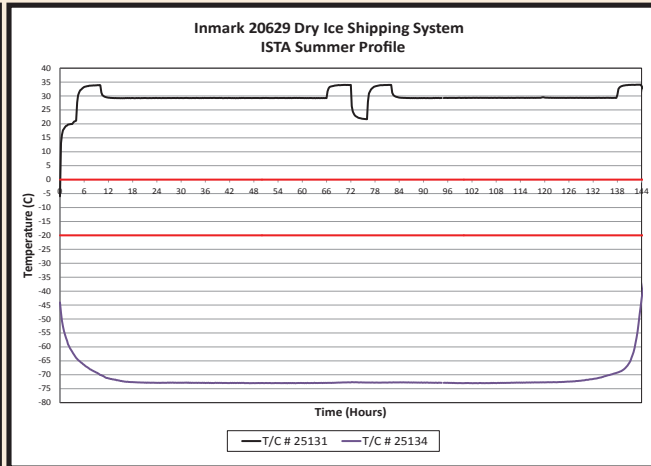
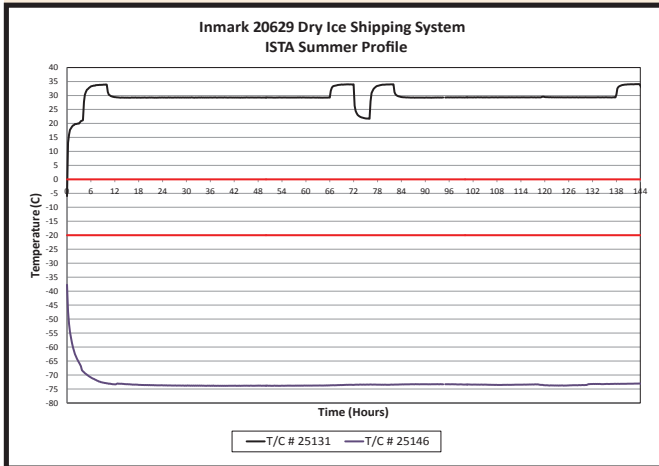


PRODUCT INFORMATION SHEET



Simulated Product – 1/3 payload - tested with 40.9kg (90lb) of dry ice
 (6) Cryoboxes (OD: 5" x 5" x 2.25") with (30) 5 ml vials in the top layer
 (6) Cryoboxes (OD: 5" x 5" x 1.875") with (30) 5 ml vials in the middle layer
 (6) Cryoboxes (OD: 5" x 5" x 1.125") with (15) 5 ml vials in the bottom layer
Temperature at the end of the test: -73.1 C

Simulated Product – 1/2 payload - tested with 30.5kg (67lb) of dry ice
 (6) Cryoboxes (OD: 5" x 5" x 5") with (15) 5 ml vials in the top layer
 (6) Cryoboxes (OD: 5" x 5" x 1.875") with (30) 5 ml vials in the middle layer
 (6) Cryoboxes (OD: 5" x 5" x 1.125") with (15) 5 ml vials in the bottom layer
Temperature at the end of the test: -42.77 C

Simulated Product – 2/3 payload - tested with 20.5kg (45lb) of dry ice
 (6) Cryoboxes (OD: 5" x 5" x 5") with (15) 5 ml vials in the top layer
 (6) Cryoboxes (OD: 5" x 5" x 2.25") with (30) 5 ml vials in the 2nd layer
 (6) Cryoboxes (OD: 5" x 5" x 2.25") with (30) 5 ml vials in the 3rd layer
 (6) Cryoboxes (OD: 5" x 5" x 1.125") with (15) 5 ml vials in the bottom layer
Reached 0°C @110.5 Hours • Reached -20°C @106.25 Hours

PART NUMBER

20629

BILL OF MATERIALS

QTY	Part Description
1	Corrugated Shipping Carton
1	EPS Cooler Set (Body and Lid)

To comply with Division 6.2 requirements, this system was tested with 95kPa Pressure Bag/Canister(s) and absorbent. These components can be included with the solution or sold separately.

SYSTEMS SPECIFICATIONS

Outside Dimensions - Shipping Carton

(mm) 641 x 552 x 502
 (in) 25.3 x 21.8 x 19.8

Inside Dimensions – Cooler Interior

(mm) 500 x 400 x 377
 (in) 19.7 x 15.7 x 14.8

Wall Thickness - Cooler

(mm) 60
 (in) 2.4

Dead Weight (Not Including Dry Ice)

(kg) 3.8
 (lb) 8.3

